

GLOBAL
SWITCH

Environment, Social
and Governance
Report 2021

Global Switch Property
(Australia) Pty Limited



Energy Performance

In 2021, the total energy consumption decreased for our data centre. We continue to explore procurement of renewable energy with a pledge to use 100% of electricity from renewable sources by 2030. Nuclear energy is considered a carbon-free energy source and is therefore included in our zero carbon mix.

Energy-Efficiency at our core

Energy efficiency is at the heart of our design from all new data centres to developing initiatives to improve energy efficiency in our existing data centres. We take the recognised sustainability approach to 'be lean' (energy efficient), 'be clean' (deploy highly efficient energy) and 'be green' (cover the reduced energy demand with use of renewable energy).

We actively review our portfolio for opportunities to selectively redevelop existing spaces in order to meet changing customer requirements and increase our return on capital.

Energy Data	2021
Total energy consumption (MWh)	159,828
Percentage of renewable energy (%)	2
Scope 1 - Combustion of fuel and operation of facilities (MWh)	596
Scope 2 - Total electricity consumption (MWh)	159,231
Total Energy Intensity* (MWh/Adjusted Occupied Space)	7.0

*Energy Intensity value is based on total energy consumption of Scope 1 & 2 and the denominator is an Adjusted Occupied Net Lettable Space metric

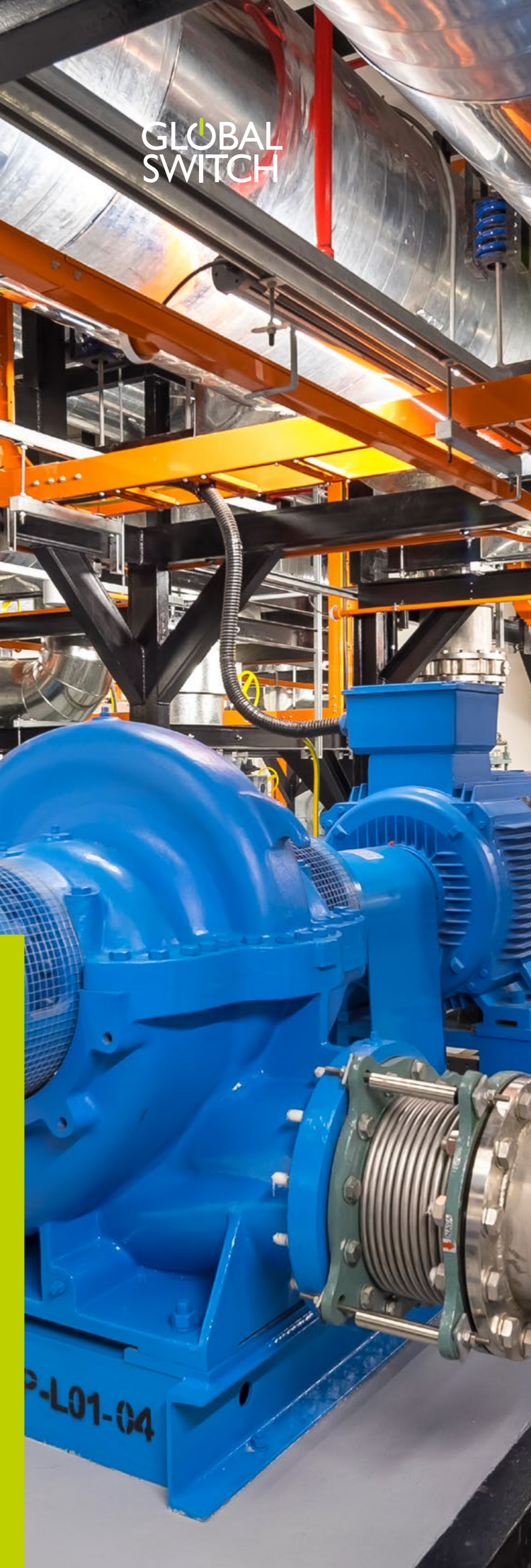
Opportunities include:

- Upgrading existing technical space and associated base Infrastructure
- Improving energy efficiency
- Increasing power densities in large private suites from original design capacities
- Improving access for our carrier and cloud service providers by building new Meet Me Rooms

Carbon

Our carbon emissions decreased between 2020 to 2021.

From 137,709 (tCO_{2e}) to 129,588 (tCO_{2e})



Performance Highlights

Energy

▶ 159,828

Total energy consumption (MWh)

▶ 159,231

Total electricity consumption (MWh)

▶ 5.78

Energy Intensity based on MWh/Adjusted Occupied Space

Carbon Emissions

▶ 85

Total Scope 1 GHG Emissions (tCO₂e)

▶ 129,503

Total Scope 2 GHG location based Emissions (tCO₂e)

▶ 5.75

Scope 1 and 2 GHG intensity based on tCO₂e/ Adjusted occupied space

▶ 85

Diesel fuel emissions (tCO₂e) - Scope 1

▶ 200

Refrigerant gas losses (Kg)

Water

▶ 166,975

Total water consumption (m³)



Our Data Centre

—5

Sydney Campus

Sydney East / Sydney West

400 Harris Street

Ultimo, Sydney

NSW 2007 Australia

+61 2 9566 7000

salessydney@globalswitch.com